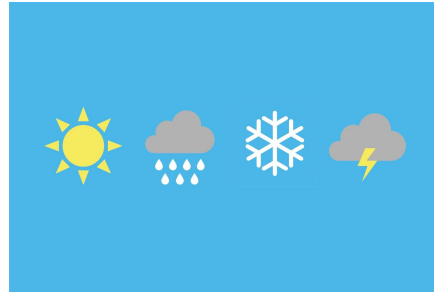


Year 3 Word Mat

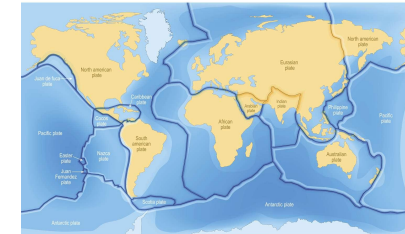


climate



weather

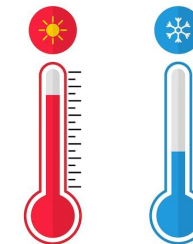
Tectonic plates



seasons



United Kingdom



temperature



farmer

human features



physical features

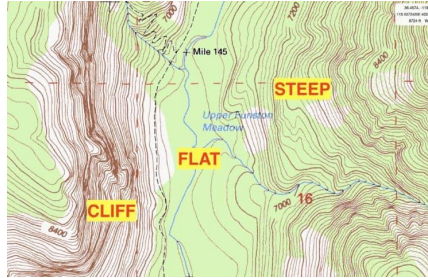


Year 3 Bookmarks

How does the location affect the climate of a country?	Why does the UK have different seasons?	Which sources can we use to report the weather?	What impact does weather have on different localities?	What environmental issues are causing changes to the world we live in?
 <p>climate</p> <p>Tectonic plates</p>  <p>tectonic map</p>  <p>equator</p>  <p>compass</p>	  <p>earth</p>  <p>rainforest</p>  <p>weather</p>	 <p>sunny</p>  <p>cloudy</p>  <p>rainy</p>  <p>windy</p>  <p>snowy</p>  <p>thunder</p>	 <p>plants</p>  <p>agriculture</p>  <p>trade</p>  <p>water drought</p>	 <p>environment we live in</p>  <p>environmental change</p>  <p>positive</p>  <p>negative</p>

Year 4 Word Mat

topographic Map



river



mountain: Mount Everest



settlement



urban



rural



agriculture



tourism



trade



Year 4 Bookmarks

What are topographical features ?	How are settlements formed?	What is the impact of climate on agriculture in the UK?	Why is tourism important to the UK?	How important is export trade to the UK?
 <p>topographic map shows...</p>  <p>river</p>  <p>mountain</p>  <p>lake</p>	 <p>settlement</p>  <p>urban</p>  <p>rural</p>  <p>village</p>	 <p>agriculture</p>  <p>crops</p>  <p>farming</p>  <p>climate</p>	 <p>tourism</p>  <p>coastal town</p>  <p>seaside</p>  <p>tourist attraction: pier</p>	 <p>trade</p>  <p>countries</p>  <p>technology</p>  <p>factory</p>



Jolly Geographer