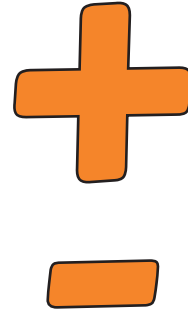


sum

The function of adding a range of numbers on a spreadsheet.



spreadsheet

A piece of software used to work out calculations.

	A	B	C
1			
2			
3			
4			
5			
6			
7			
8			

robot

A piece of computer equipment that is programmed to carry out a variety of tasks.



row

A range of cells that go across (horizontally) on a spreadsheet. Rows are numbered, e.g. row 1, row 2

	A	B	C
1			
2			
3			
4			
5			
6			
7			
8			

pattern

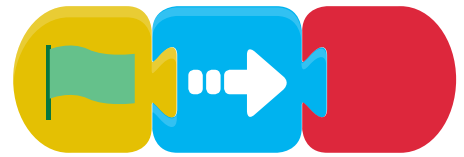
Similarities or characteristics that computer problems share.



twinkl.com

program

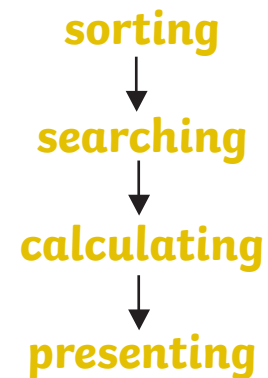
A set of instructions given to a computer device so that it can function properly.



twinkl.com

processing

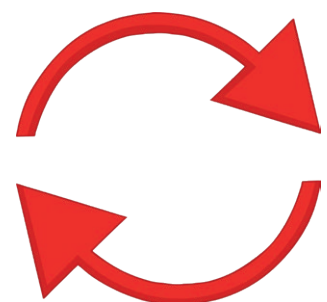
A sequence of stages that occur when data is inputted into a computer device. Stages include sorting, searching, calculating and presenting.



twinkl.com

repeat

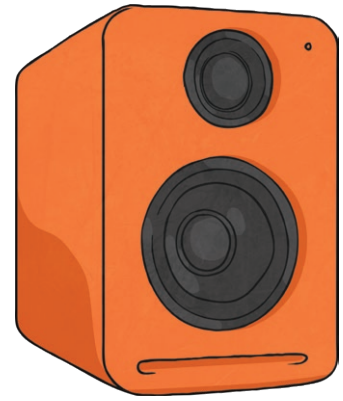
When a command or process is repeated.



twinkl.com

output

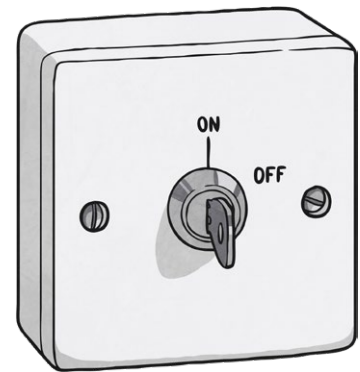
The data or outcome generated by a computer. This could be the solution to a calculation on a calculator or an increase in volume on a speaker.



twinkl.com

variable

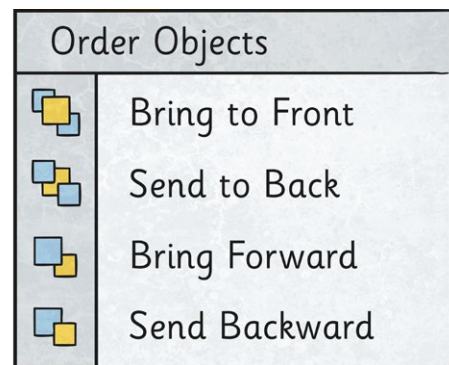
A piece of data that you can alter and change.



twinkl.com

sequence

The order in which a set of instructions are performed or carried out.



twinkl.com

input

A piece of hardware used to enter data into a computer such as a keyboard, microphone, sensor or touchscreen.



twinkl.com

formula

A calculation using numbers, mathematical operations and cells in a spreadsheet.

D5+D6

twinkl.com

decision

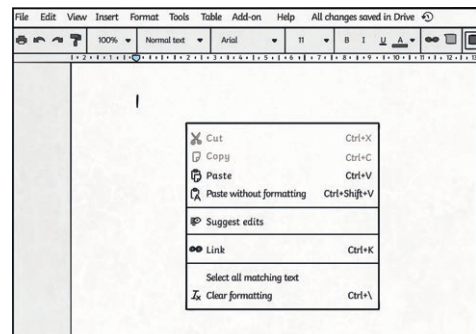
The process of answering a question so that a computer program can continue a sequence.



twinkl.com

command

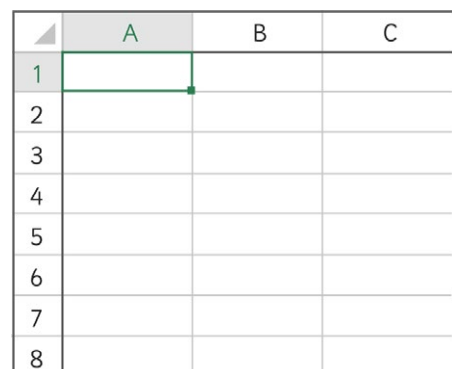
An instruction given by a user to tell the computer what to do.



twinkl.com

cell

A box on a spreadsheet in which you enter a single piece of data. Cells are identified by the column and row, e.g. cell E12 = column E and row 12

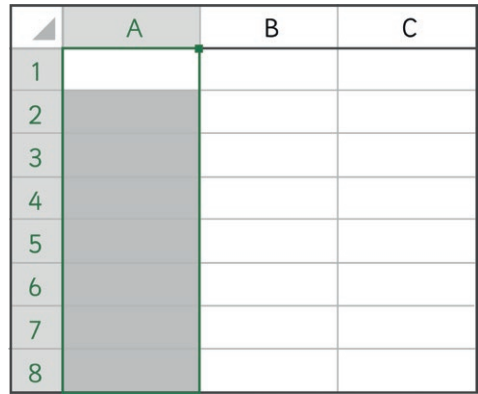


	A	B	C
1			
2			
3			
4			
5			
6			
7			
8			

twinkl.com

column

A range of cells that go down (vertically) on a spreadsheet. Columns are identified by letters, e.g. column A, column R



	A	B	C
1			
2			
3			
4			
5			
6			
7			
8			

twinkl.com

procedure

A collection of programming instructions for a task. A computer programme has one or more procedures.



twinkl.com

model

A computer program that has been developed to copy the way a system works in real life.



twinkl.com

web

The World Wide Web is part of the internet that is made up of web sites.



twinkl.com

virus

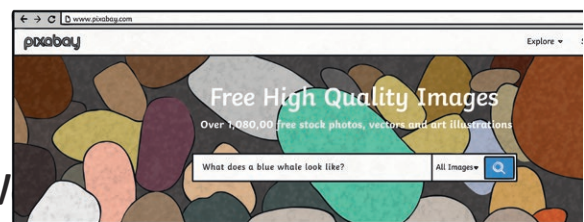
A computer virus destroys data.

WARNING!

twinkl.com

search

You can search for data and information on the World Wide Web using a search engine.



twinkl.com

URL

'Uniform Resource Locator' – the unique web address for individual web pages.



twinkl.com

spam

Spam is electronic rubbish (junk) that gets emailed to people.



twinkl.com

E-Safety

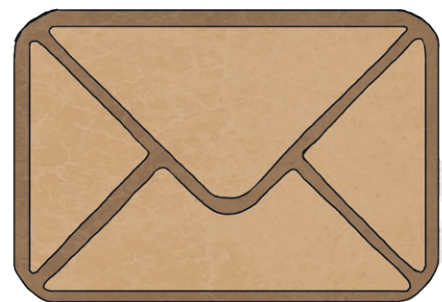
E-Safety refers to keeping safe whilst using computer technology.



twinkl.com

email

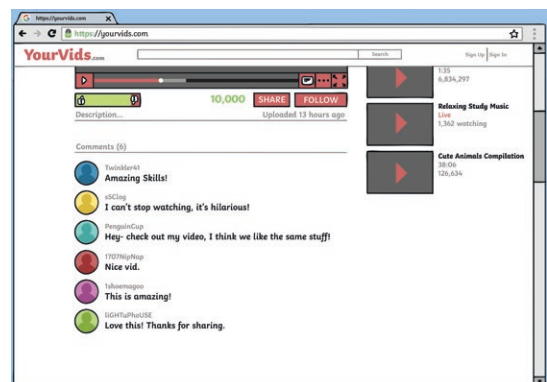
Email is electronic mail that is stored and exchanged via telecommunications.



twinkl.com

hit

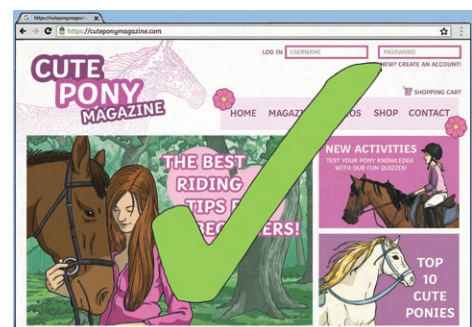
Web sites receive a 'hit' when someone views the web page.



twinkl.com

accuracy

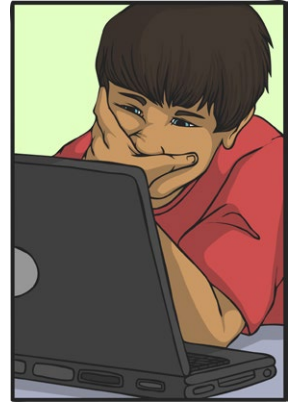
There are different degrees of accuracy of information on the internet. Some web sites are more trust-worthy and accurate than others.



twinkl.com

cyber-bullying

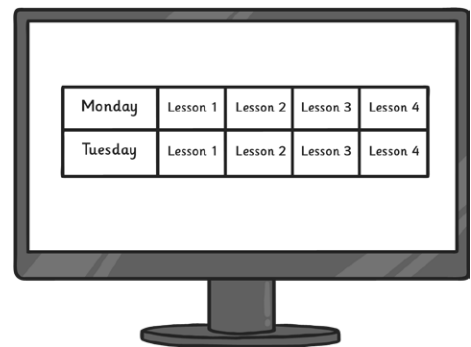
Cyber-bullying is bullying that takes place over electronic devices such as mobile phones, computers, tablets and iPads.



twinkl.com

hyperlink

A word, phrase or icon that you can click on to jump to a new or different document or website.



twinkl.com

internet

A global computer network that provides information and communication opportunities.



twinkl.com

bookmarks

A way of saving a web page address for future use.



twinkl.com

browser

Software that is used to access the internet such as Chrome or Safari.



twinkl.com

collaborate

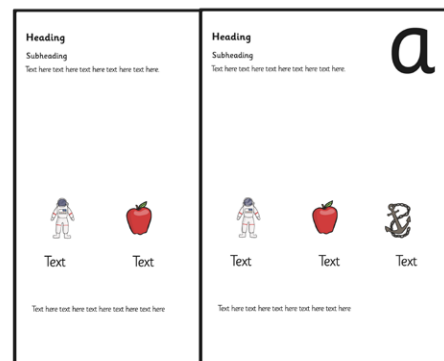
When groups of people or organisations work together towards a technological goal.



twinkl.com

copy

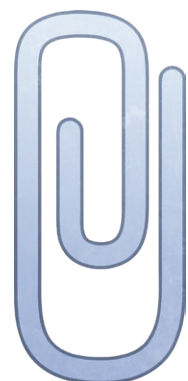
Copying a piece of data or information in order to place it somewhere else on a document.



twinkl.com

attachment

You can attach a file to an email message from a separate folder.



twinkl.com

bias

Some information on the internet is influenced by the creator's opinion and therefore biased.

Comments (6)

-  Twinkler41
Amazing Skills!
-  s5Clog
I can't stop watching, it's hilarious!
-  PenguinCup
Hey- check out my video, I think we like the same stuff!
-  1707NipNap
Nice vid.
-  1shoemagoo
This is amazing!
-  lIGHTuPhoUSE
Love this! Thanks for sharing.

twinkl.com

address

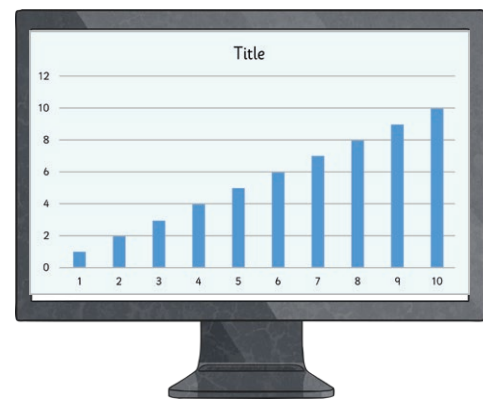
The location of where data is stored on a computer or on a computer network.



twinkl.com

handling

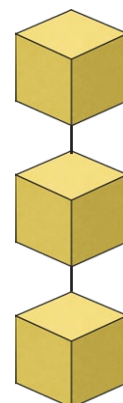
The use of computer technology to gather and use data and information.



twinkl.com

branching

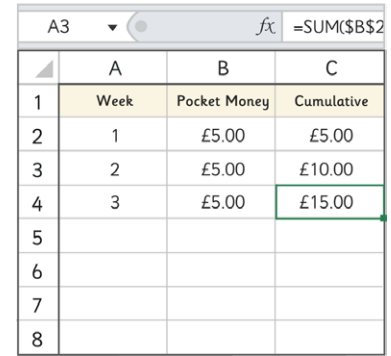
An instruction that tells a computer to begin following a different sequence within a program.



twinkl.com

database

A logical and organised collection of data or information.



	A	B	C
1	Week	Pocket Money	Cumulative
2	1	£5.00	£5.00
3	2	£5.00	£10.00
4	3	£5.00	£15.00
5			
6			
7			
8			

twinkl.com

collect

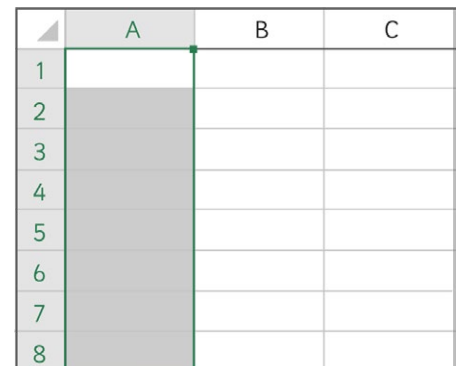
To collect data for a specific purpose.



twinkl.com

field

Single units of information in a database system, usually a single column within a table.



	A	B	C
1			
2			
3			
4			
5			
6			
7			
8			

twinkl.com

questionnaire

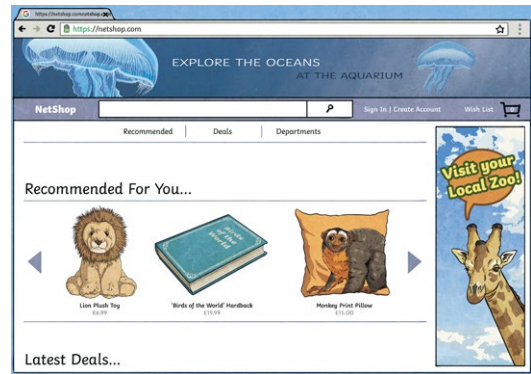
A method for gathering data.



twinkl.com

record

All of the data about a particular person or thing.



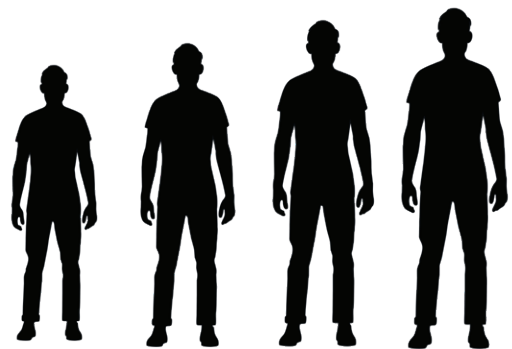
twinkl.com

sort

To arrange a list of items in a logical way, e.g. from lowest price to highest price.

Lowest

highest



twinkl.com

respondent

Someone that answers questions or participates in research studies.



twinkl.com

table

A way to organise and present data in rows and columns.

2.15pm - 2.30pm	2.30pm - 2.45pm	2.45pm - 3.00pm

twinkl.com

test

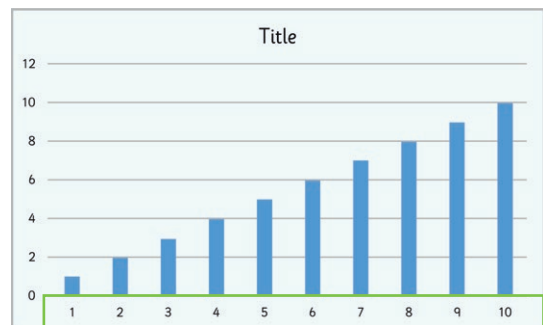
Computer programs need to be tested to check for errors or inaccuracies.



twinkl.com

x-axis

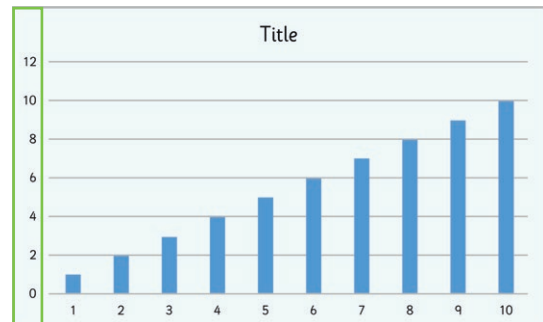
The horizontal axis of a line-graph used to represent data.



twinkl.com

y-axis

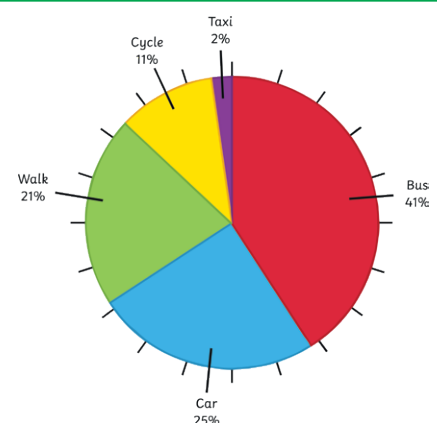
The vertical axis of a line-graph used to represent data.



twinkl.com

pie

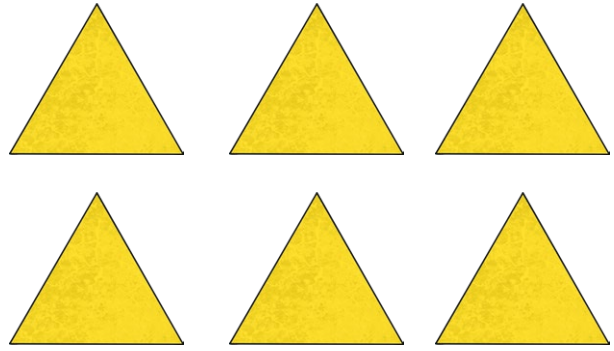
A way to organise and present data using sections of a circle.



twinkl.com

align

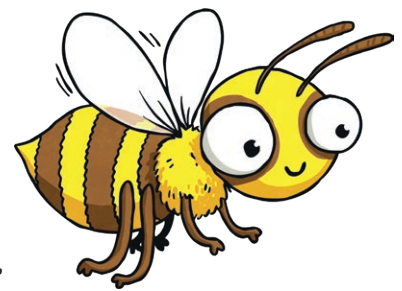
To line up text or objects with each other on a page.



twinkl.com

animation

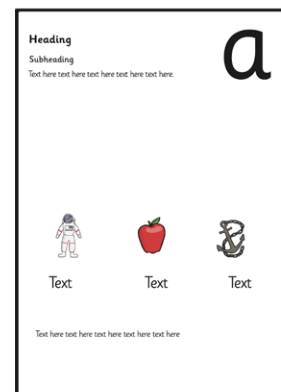
Still images linked together as part of a timed sequence to create a moving picture.



twinkl.com

combine

Adding text and images on a page.



twinkl.com

bold

Thick, large text that stands out.



twinkl.com

compose

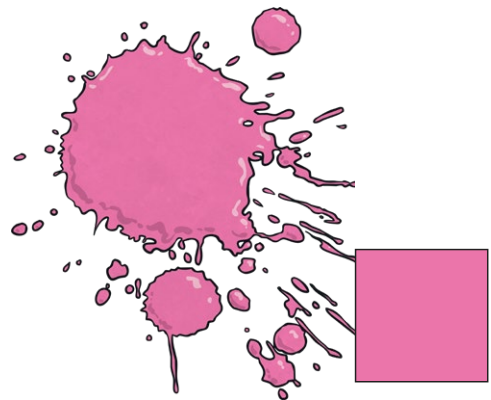
To create, write or make a page or document.



twinkl.com

fill

Shapes and objects can be filled with colour on a page.



twinkl.com

image

A picture or photograph added to a document.



twinkl.com

melody

Sound in the form of a musical tune added to a document.



twinkl.com

italic

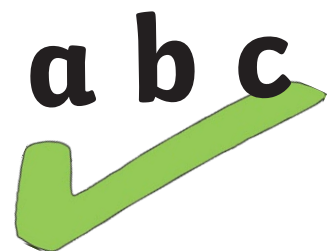
A cursive font based on calligraphic handwriting.



twinkl.com

spellchecker

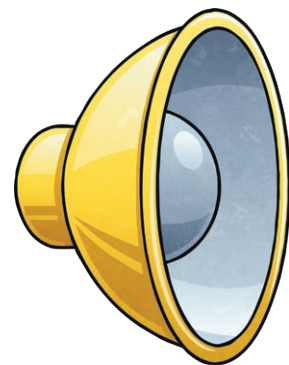
A computer program that checks the spelling of words in a text.



twinkl.com

sound

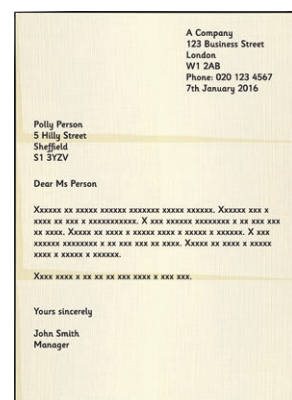
Sound files can be added to a document such as a PowerPoint presentation.



twinkl.com

text




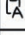

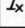
The written part of a document.



twinkl.com

paste

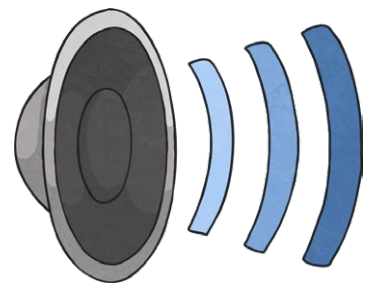
Taking data (a word, phrase or image) from one part of a document and placing it somewhere else.

 Cut	Ctrl+X
 Copy	Ctrl+C
 Paste	Ctrl+V
 Paste without formatting	Ctrl+Shift+V
Suggest edits	
 Link	Ctrl+K
Select all matching text	
 Clear formatting	Ctrl+\

twinkl.com

narration

A sound file that is added to a document to read a story.



twinkl.com

multimedia

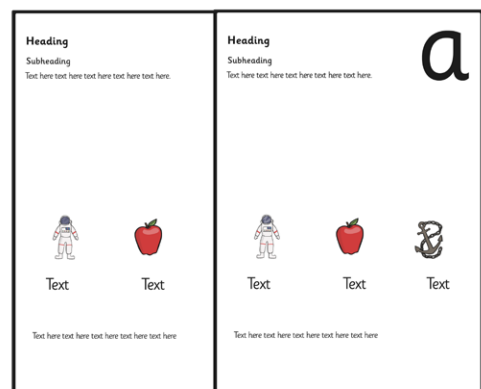
Using more than one form of communication such as text, graphics, animation and audio.



twinkl.com

layer

TheIn graphics software, objects and images are placed on different layers to create a digital image.



twinkl.com

cut

To remove data (a word, phrase or image) from a document.

