

Line



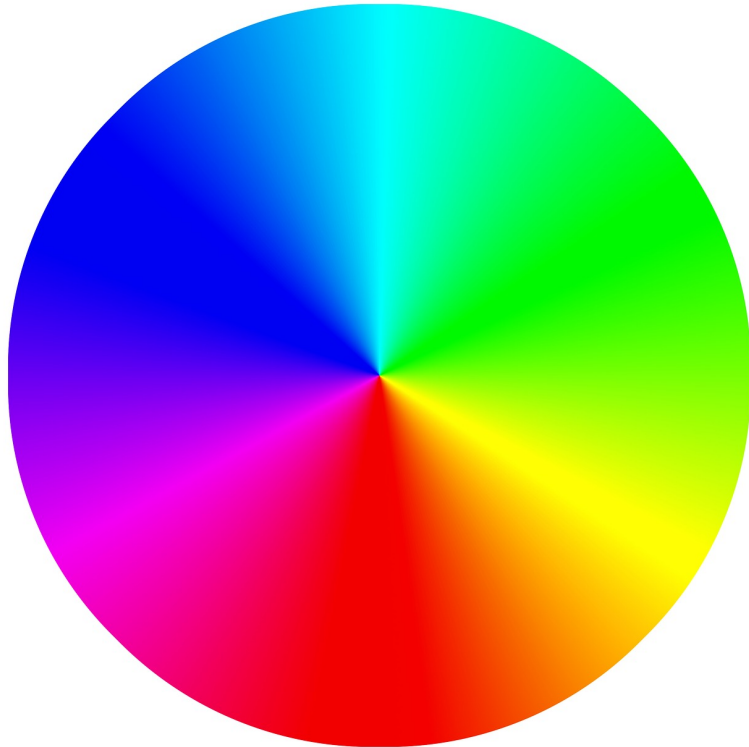
A line is a mark made on a surface that joins different points. Lines can vary in length, width, direction and shape.

Tone



The lightness or darkness of an object.

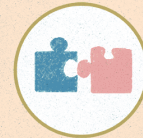
Colour



The dominant colour and different shades that are produced.

Composition

Elements Of Composition In Art



Unity



Balance



Movement



Rhythm



Focus



Contrast



Pattern

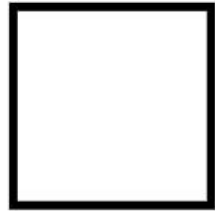


Proportion

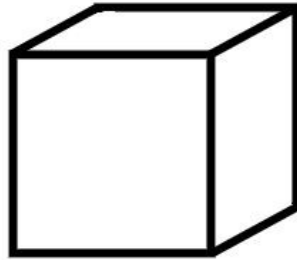
ThoughtCo.

The way in which all elements work together to produce an overall effect.

Shape/Form



Shape

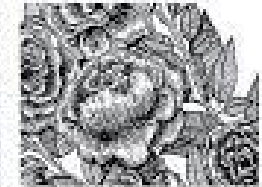
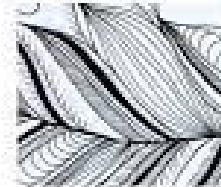
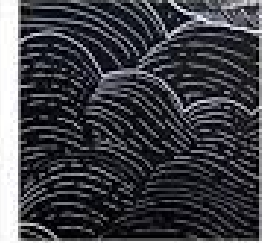


Form

Shape- An element of art that is two-dimensional, flat, or limited to height and width.

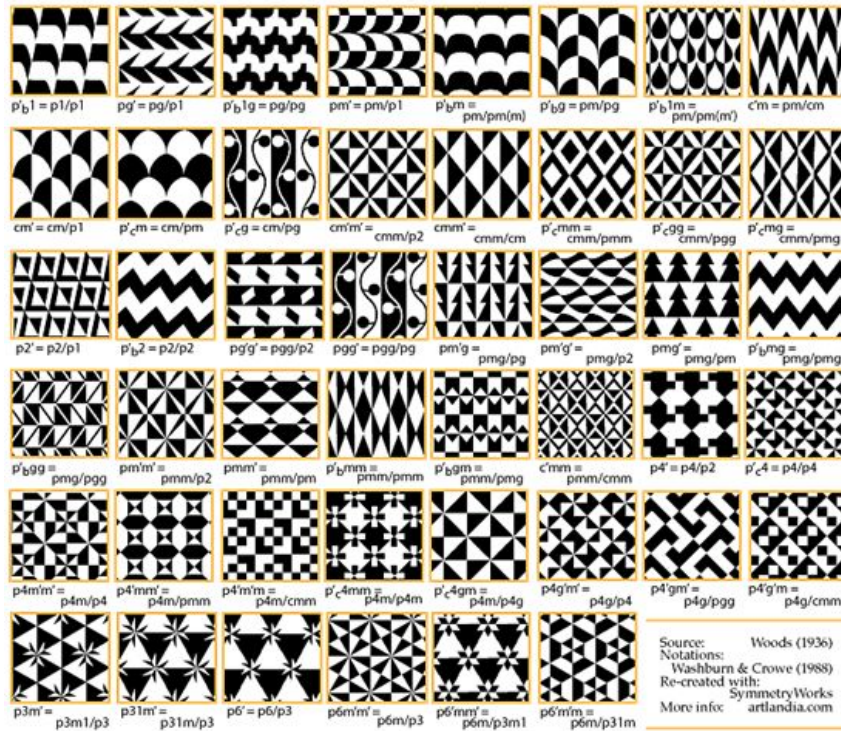
Form- An element of art that is three-dimensional and enclosed.

Texture



The perceived surface quality of a work of art. It may be perceived physically, through the sense of touch, or visually, or both.

Pattern



A design in which lines, shapes, forms or colours are repeated.

Style

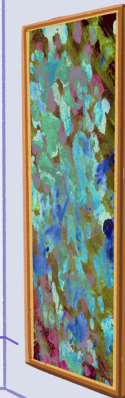
7 Major Painting Styles



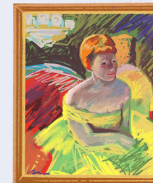
Painterly



Expressionism & Fauvism



Abstract



Impressionism



Realism



Photorealism



Abstraction

ThoughtCo.

The visual appearance of a work of art that relates it to other works by the same artist or one from the same period.

Art concepts