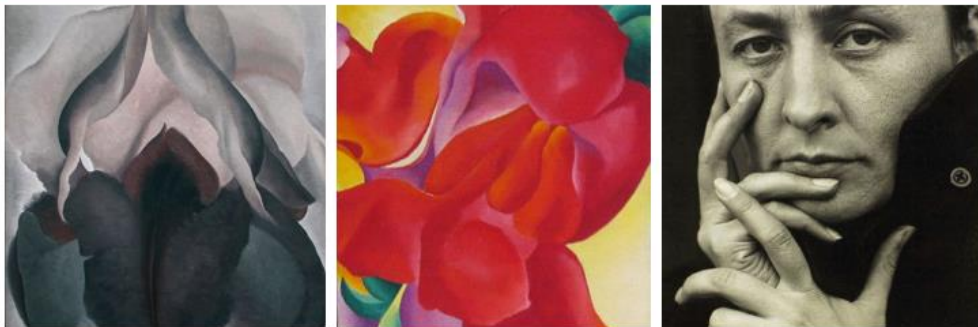


Georgia O'Keeffe - is famous for experimenting with painting close up views of flowers and depictions of Navajo culture. She was a pioneer of the American modernism artistic movement.

Georgia O'Keeffe

1887 - 1986



Transparent - allowing light to pass through so that objects behind can be distinctly seen.



Opaque - materials that do not allow any light pass through. Wood and metal are examples of no light passing through.



Translucent - allowing light, but not detailed shapes, to pass through; semi-transparent.



Close - range: Georgia O'Keefe began painting in a new and innovative way. Instead of painting a vase of flowers from far away (as American painters before her had done), she put her face close to one flower and painted what she saw, magnified.

