

**Anus** - the opening at the end of the digestive system from which faeces (poor) leaves the body.



**Oesophagus** - the long tube between the mouth and the stomach.



**Gall bladder** - a small sac below the liver. It stores and releases bile into the small intestine.



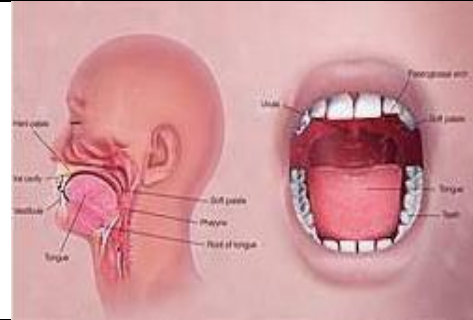
**Large intestine** - the shorter wider tube that follows the small intestine.



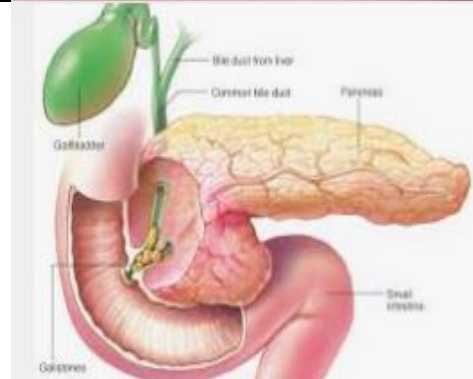
**Liver** - a large organ which makes bile that neutralises stomach acid.



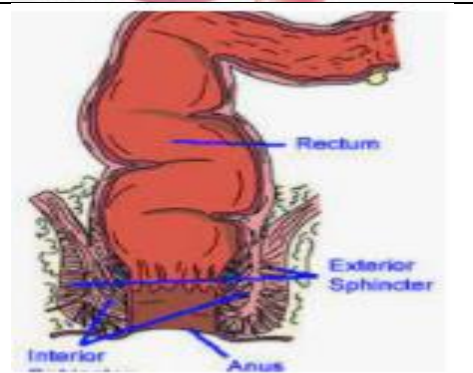
**Mouth** - the first part of the digestive system, where food enters the body.



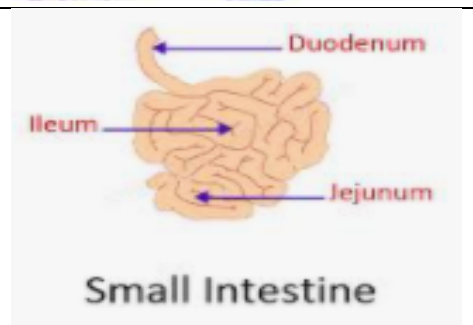
**Pancreas** - a gland below the stomach which makes lots of chemicals called enzymes that help break down food.



**Rectum** - the lower part of the large intestine, where faeces (poor) is stored before it leaves the body.



**Small intestine** - the long, thin winding tube that food goes through after it leaves the stomach.



**Stomach** - a sack-like, muscular organ that is attached to the oesophagus. When food enters the stomach, it is churned with lots of acid.

