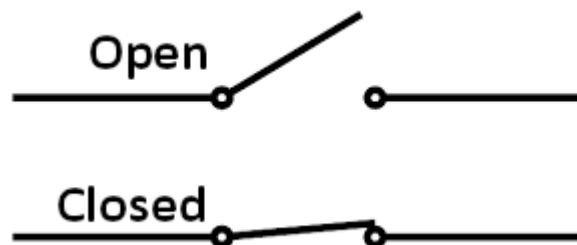


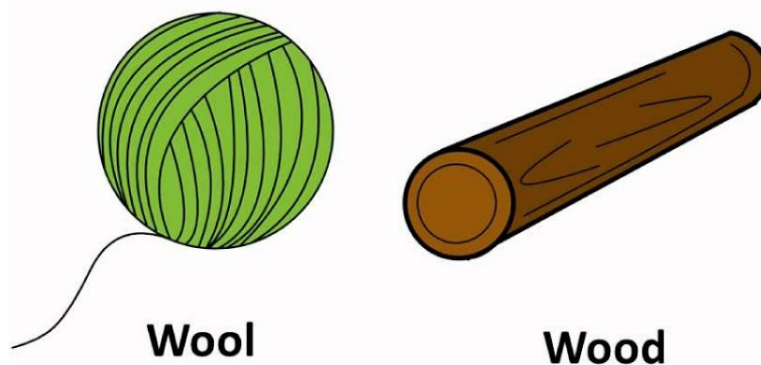
Switch

An electrical component that can disconnect or connect the conducting path in an electrical circuit, interrupting the electric current or diverting it from one conductor to another.



Insulator

A material or an object that does not easily allow heat, electricity, light, or sound to pass through it.



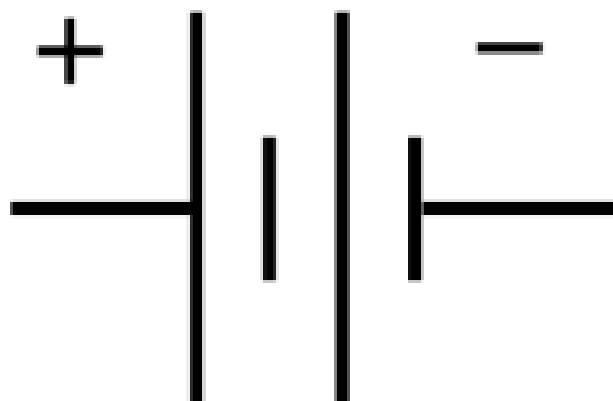
Conductor

A material or object that permits an electric current to flow easily. It is capable of transmitting another form of energy (as heat or sound)



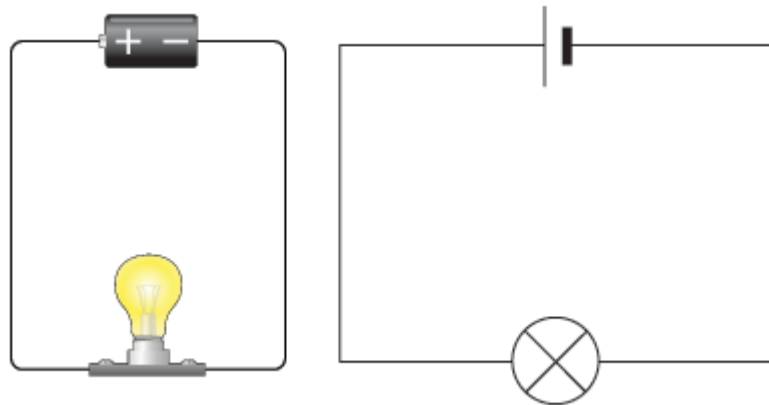
Battery

A material that allows electricity to pass through easily. It contains one or more cells and produces chemical energy which is converted into electrical power. It has a positive and negative terminal.



Circuit

The source of electrical power can be a battery or mains. The part of an electrical circuit, The components must be connected properly to allow electrical current to flow through them. E.g. cell, motor, resistor and switch.



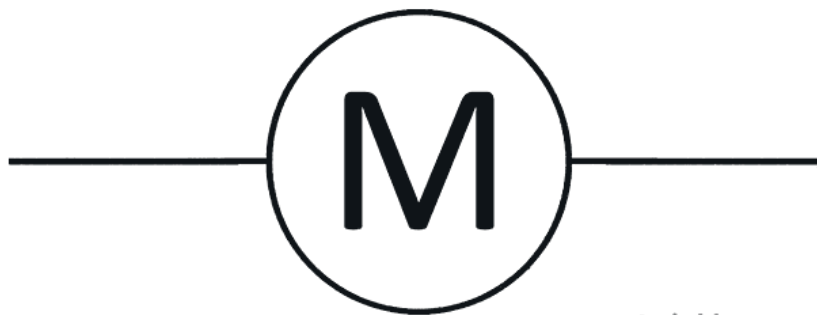
Voltmeter

An instrument for measuring electric potential in.



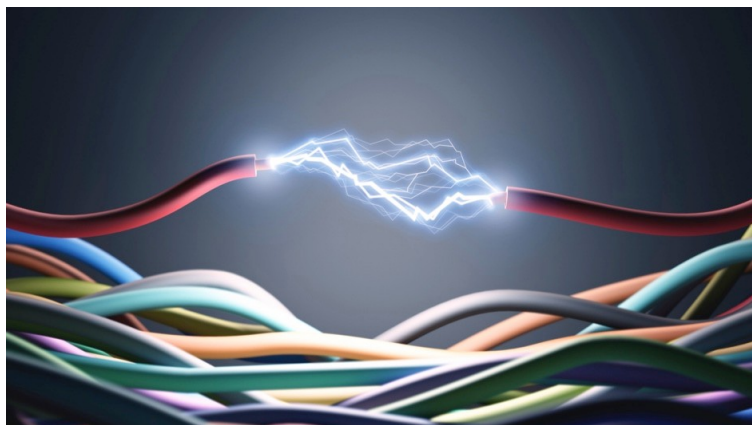
Motor

An electrical machine that converts electrical energy into mechanical energy.



Voltage

Voltage is the name for the electric force that causes electrons to flow. It's the measure of potential difference between two points in the circuit. Voltage may come from a battery or a power plant.



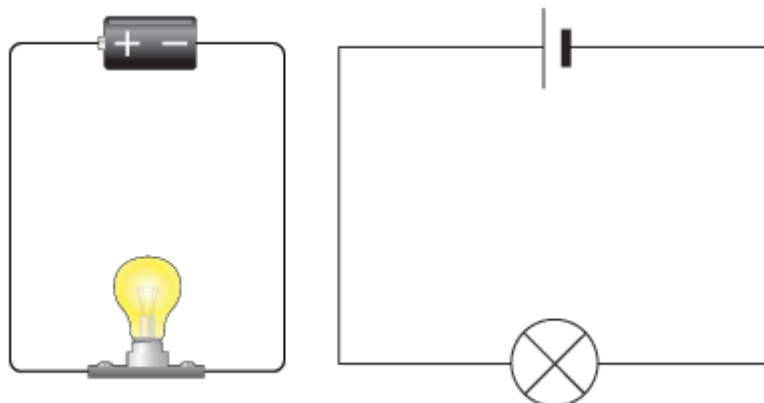
Appliance

A machine or piece of equipment that performs a task.



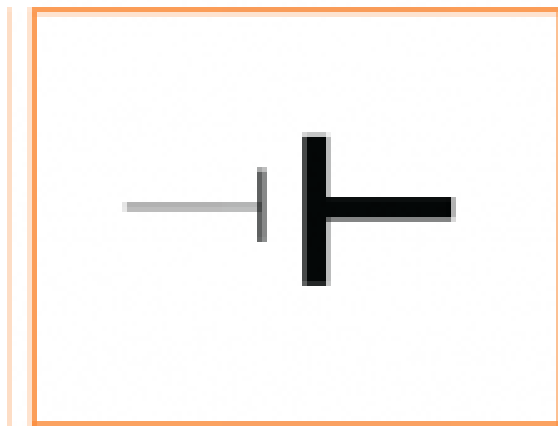
Bulb

In relation to electricity, a bulb is a glass container that converts electricity into light. It has a piece of metal inside that lights up when an electrical current passes through it.



Cell

A device used to generate electricity, or to make chemical reactions by applying electricity. A battery is one or more cells connected.



Cell / battery

Electricity

The flow of tiny particles called electrons and protons. It can also mean the energy you get when electrons flow from place to place.

Electricity provides most of the energy to run the modern world.

