

Wood End Park Academy

Child Protection Training: Prevent



What is the Prevent Duty?

The government describes the purpose of Prevent as “to reduce the threat to the UK from terrorism by stopping people becoming terrorists or supporting terrorism.” Prevent hopes to avoid acts of terrorism by intervening before individuals become radicalised, and stopping them from committing acts of violence for whatever extreme ideologies they have come to believe.



The Prevent Strategy objectives are:

- Ideology - respond to the ideological challenge of terrorism and the threat we face from those who promote it
- Individuals - prevent people from being drawn into terrorism and ensure that they are given appropriate advice and support
- Institutions - work with sectors and institutions where there are risks of radicalisation which we need to address.

CHANNEL is a key element of the "Prevent" strategy and is a multi-agency approach to protect people at risk from radicalisation. Channel uses existing collaboration between local authorities, statutory partners (such as education and health sectors, social services, children's and youth services and offender management services), the police and the local community to:

- Identify individuals at risk of being drawn into terrorism
- Assess the nature and extent of that risk; and develop the most appropriate support for the individuals concerned.

Channel is about safeguarding children and adults from being drawn into committing terrorist-related activity. It is about early intervention to protect and divert people away from the risk they face before illegality occurs.

What is extremism and radicalisation?

Extremism under the Prevent duty is defined as “vocal or active opposition to fundamental British values, including democracy, the rule of law, individual liberty and mutual respect and tolerance of different faiths and beliefs.” Extremism can lead to individuals becoming radicalised, supporting or committing violent acts as a means to promote their extremist ideals. They hold negative views about anyone from a different ethnicity, culture, gender, race or sexual identity.

Radicalisation is defined as “the process by which a person comes to support terrorism and extremist ideologies associated with terrorist groups.



Children who are at risk of radicalisation may have low self-esteem, or be victims of bullying or discrimination. It is important to note that these signs can also be part of normal teenage behaviour – staff should have confidence in their instincts and seek advice if something feels wrong. If staff are concerned about a pupil, they will follow our procedures set out in the Child Protection policy, including discussing their concerns with the DSL. Staff should always take action if they are worried.

Threat level

The UK National Threat Level was lowered on 8th Feb 2021 to substantial. An attack is likely.

The UK is facing a threat from Islamist Terrorism and Extreme Right Wing Terrorism (ERWT). Also, Left-Wing anarchist and Single-issue Terrorism (LASIT) and Self-Initiated Terrorism (S-IT).

The terrorist threat to the UK is primarily from Self-Initiated Terrorism. They are unpredictable and difficult to detect.

The Incel movement is a radical ideology centered on violence towards women. A serious threat. 'Involuntary Celibates' - women's power to select their sexual partner's. This degraded men's social status. It lead to harassment, self-harm/ suicide **(Terminology- ROPING)**, assault, mass rape, murder and dehumanisation of women. Presence is online. **(Terminology- The Black Pill; life is useless, lie down and rot)**

Right Wing Extremism

Cultural Nationalist (formerly Far Right) groups such as Britain First, EDL, Democratic Football Alliance.

White Nationalist groups such as Patriotic Alternative, Hundred Handers, Generation Identify.

White Supremacist (formerly Extreme Right Wing) groups such as Blood & Honour, National Action.

There are 8 extreme right-wing organisations in the UK.

- A politics student who called for the 'extermination' of Jewish people has been found guilty of 12 terrorism charges.

Local Case - National Action; a 9 year old has been referred to prevent in Hillingdon.

An ex police officer from Uxbridge is part of the National Action group

Far Right Numbers

18

**1 = A 8 = H.
18 = AH**

Far right code
for Adolf Hitler

88

**8 = H,
88 = HH**

Heil Hitler
Neo Nazi
greeting

14

We must
secure the
existence of
our people
and a future
for White
children

28

**2 = B, 8 = H.
= B&H**

These numbers
represent
Blood &
Honour

23

23 = W

This simply
means White

Main Far Right Symbols



Nazi Swastika



C18 Death's Head/
SS logo



British Movement



Racist Celtic Cross



Ku Klux Klan



Identitarian Symbol



Hundred Handers



Creativity
Alliance/Movement

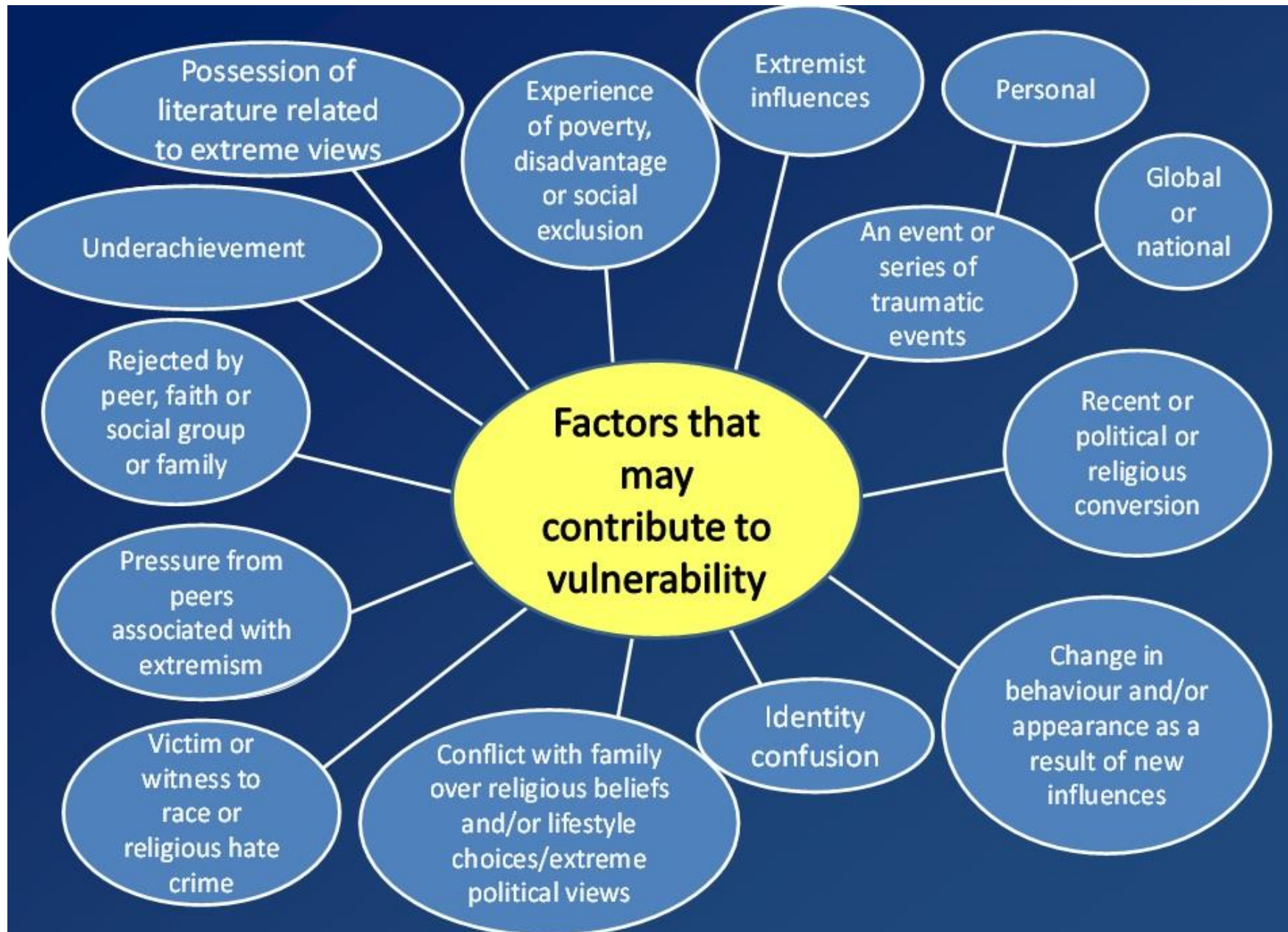


Fascist Logo
Activate Windows
Go to Settings to activate Win

Signs of Radicalisation

People getting involved with extremism can act in many different ways. Here are just a few examples to look out for:

- Isolating themselves from family and friends
- Talking as if from a scripted speech, spending more time online
 - Unwillingness to discuss their views, they are right
- A sudden disrespectful attitude towards others, talking about us and them
- Increased levels of anger, in general, against the media, politicians, different communities
- Increased secretiveness, especially around internet use.
- New tattoos of numbers or symbols you have never seen before
- Talking in support of individuals and groups who are anti-Muslim or racist



These are examples of what vulnerability might look like – not an exhaustive list

Islamist Extremism

Violent Islamist extremism is an umbrella concept for different forms of violence promoting extremist groups within both Sunni and Shia Islam.

London is likely to receive an increasing number of returning Foreign Terrorist Fighters (FTF) from Syria and Iraq throughout 2021. It is likely that any returning will engage in some terrorist activity.

National concern - Attacks by Islamist Self-Initiated Terrorists (S-IT) in London are almost certain to be planned within the next 12 months.

Cases

-20 year old posting photos of guns and weapons on Instagram. Red flag

-18 year old posting dirty videos online. He was searching and watching videos of porn, a woman hammering a man's genitals, a man having intercourse with chickens.

-15 year old Autistic boy. He was being bullied at school for 2 years. He went online to watch videos on how to kill people, and where to buy weapons. He 'egged' his neighbour's car. He was Muslim. He said to him 'I will do to what the people did to the mosque in New Zealand. Contacted police; hate crime.

What to do if there is a concern?

What we do at WEPA when we encounter extreme views

- **NOTICE-** If you observe anyone demonstrating any behaviour which you think is worrying, take notice but do not say anything to them or alert them of your concern.
- **CHECK-** Talk to someone you trust about the person you are worried about. Check if they have similar worries about them.
- **SHARE-** Report to a member of the Safeguarding Team

How do we do this at WEPA?

At The Park Federation we should:

- Develop learning experiences where children get to respect and understand different viewpoints and religions
- Children know that discrimination will not be tolerated and is not cool
- Encourage use of the Worry Box so children know they can air concerns
- We build up the self esteem, confidence and voice of each child (British Values)
- We pick up on and challenge extreme views



PREVENT = SAFEGUARDING

- Prevent wants to make the UK Safer
- It wants to challenge ALL extremist ideas and show people extremism offers no answers
 - Prevent seeks to stop people becoming violent, offer support to help people & help them come away from extremism

Prevent wants to stop violence and protect people from
danger

Any questions...